



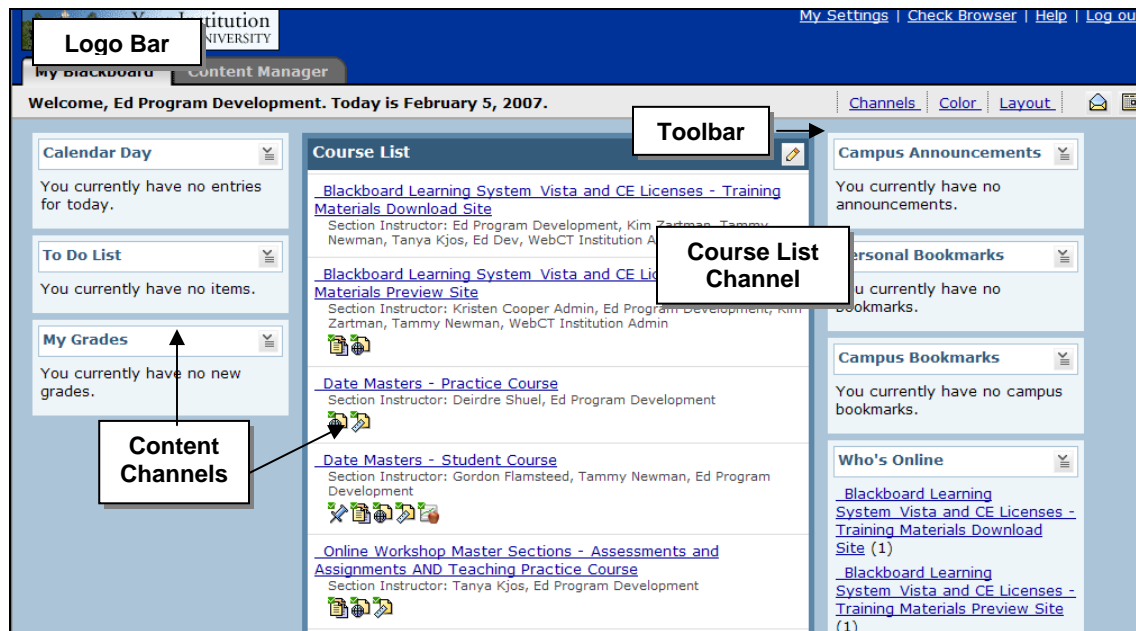
## Interface

Vista provides a single point of access to your courses. It also enables you to:

- access tools such as Calendar, Mail, File Manager, and Who's Online.
- create a personal to do list.
- access external courses (online courses that reside on other servers).
- create personal bookmarks, access campus bookmarks, and read campus announcements.

### The Vista Interface

The Vista interface is similar for designers, instructors, and students. The screen contains:

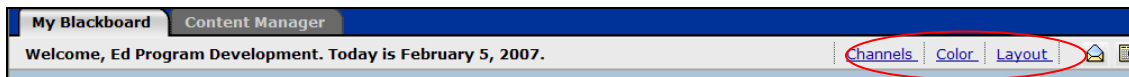


- **Logo Bar** – Identifies the institution. It is always present and it contains links to Help and Log Out.

- **Toolbar** - Contains icons for Mail, Calendar, and File Manager.
- **Course List Channel** - Provides access to the courses in which the user is enrolled. Notification of new announcements, calendar entries, mail, discussions, assessments, and assignments for each course may also appear here.
- **Content Channels** - Each channel contains a category of content, such as My Grades, To Do List, Personal Bookmarks, and External Courses.

## Customizing Vista Interface

You can customize the Logo Bar. You can also customize the look and feel of the My Blackboard page to suit individual preferences by using the Channels, Color, and Layout links in the toolbar.



- **Channels** allow you to hide and reveal channels. You can hide all of the channels except the Course List channel.
- **Color** customizes background and table colors.
- **Layout** changes the order and location of the channels.


## My Settings

Users can access their personal user information.

- **My Profile** allows you to manage elements of your personal profile, which displays in the class Roster. You can also update your password from My Profile.
- **My Tool Options** allows you to specify default settings for certain tools. For example, you can select whether you want the default Calendar view to be daily, weekly, or monthly.
- **My Roles** identifies your role in each course you are enrolled in.

My Settings

[My Profile](#)
[My Tool Options](#)
[My Roles](#)

<b>User name:</b> tnewman	Public	<input type="checkbox"/>	<b>Photo</b>	<input checked="" type="checkbox"/> Public
<b>First name:</b> Tammy		<input checked="" type="checkbox"/>		
<b>Last name:</b> Newman		<input checked="" type="checkbox"/>		
<b>E-mail:</b>		<input type="checkbox"/>		
<b>Academic Major:</b>		<input checked="" type="checkbox"/>		
<b>Extra-Curricular Activities:</b>		<input checked="" type="checkbox"/>		
<b>Areas of Interest::</b>		<input checked="" type="checkbox"/>		
<b>Title:</b>		<input checked="" type="checkbox"/>		
<input type="button" value="Edit Profile"/> <input type="button" value="Change Password"/>				
<input type="button" value="Done"/>				

## Using Browser Checker

There is both automatic and manual browser checking. The automatic browser check occurs only upon your first access to the Log In page and to eCampus Vista. It displays a warning if you are using an unsupported browser. The manual browser checker can be used at any time.

To check your browser, click the **Check Browser** link. **Note:** If the link does not appear, your administrator has disabled this feature.

There is also an automatic check to see if your browser is Java™ enabled and that the required version of Java Virtual Machine (JVM) has been installed. These checks occur whenever you access a tool that requires Java, such as the HTML Creator.

You will see a warning if you do not have Java enabled, or if you do not have the correct version of Java Virtual Machine installed. The warning includes a link to the Browser Tune-Up page for additional information.