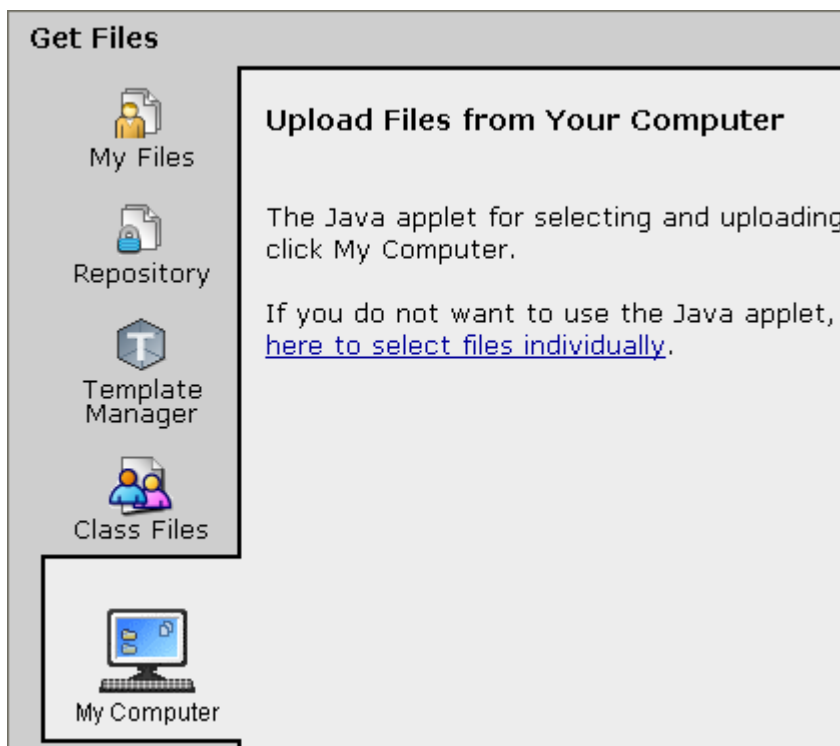


Import Quizzes/Surveys/Question Database and all Content Module files

1. From the **Build Tab**, Click on **Manage Course**
2. Click on **Import**
3. Select the **My Computer** icon



4. **Locate** your zip file on your personal drive created when you exported you're your WebCT course.
5. Select your file and click **Open**
6. Click **Return**
7. **Repeat** this process until you have uploaded all your content module files and your quiz file.

Remove log links from home page

As you upload your content module files, you will notice links on the home page to a log for each content module. These will be marked (Hidden) and can now be removed.



1. Select the **ActionLink**
2. Select **Remove Link** and confirm that you want to remove it.

Once you have imported all content module files and the assessment file, you will now have these items available to add to your homepage and learning modules.

Adding a Learning Module to the home page

To add a learning module to your homepage:

1. Select the “Add Content Link” action link
2. Choose Learning Module.
3. Within the Inventory selection box, select the item you want to add
4. Click “Add Selected”.

Adding an Assessment to a Learning Module

To add an assessment to a learning module:

1. Select the Learning Module in which you wish to add the assessment.
2. Select the “Add Content Link” action link
3. Select Assessments
4. Within the Inventory selection box, select the assessment you wish to add.
5. Click “Add Selected”.