

## How to load the required plugins.

- After registration, log in using your login ID and password.
- Click on Pre-Algebra Math-Flex, Spring 2006 to enter the class.

The screenshot shows the CourseCompass interface. At the top, there is a navigation bar with "Home", "Help", and "Logout" links. Below this, the user is greeted with "Welcome, Jimmy". The main content area is divided into several sections:

- CourseCompass My Courses:** A box titled "Courses you are taking:" featuring "Pre-Algebra Math-Flex, Spring 2006" with an "Enroll in a New Course" button.
- My Announcements:** A section for "System Announcements" (none posted today) and "Pre-Algebra Math-Flex, Spring 2006" with links for "Welcome to MyMathLab for Basic Mathematics, 9/e, by Marvin L. Bittinger", "Take a tour!", and "Instructor Resources".
- Learning with CourseCompass:** A list of helpful links including "How Do I?", "CourseCompass Student Help", "CourseCompass Student Quick Start Guide", "CourseCompass Release Notes", and "Get the TestGen Plug-in".
- Tools:** A sidebar menu with links for "Announcements", "Calendar", "Tasks", "View Grades", "Send E-mail", "Address Book", "Personal Information", and "Research Navigator".

- Click on MyMathLab Installation Wizard.

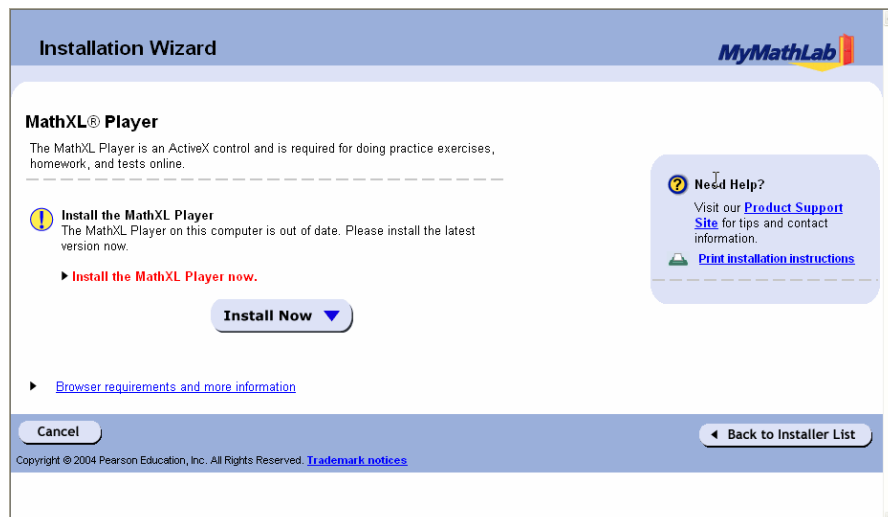
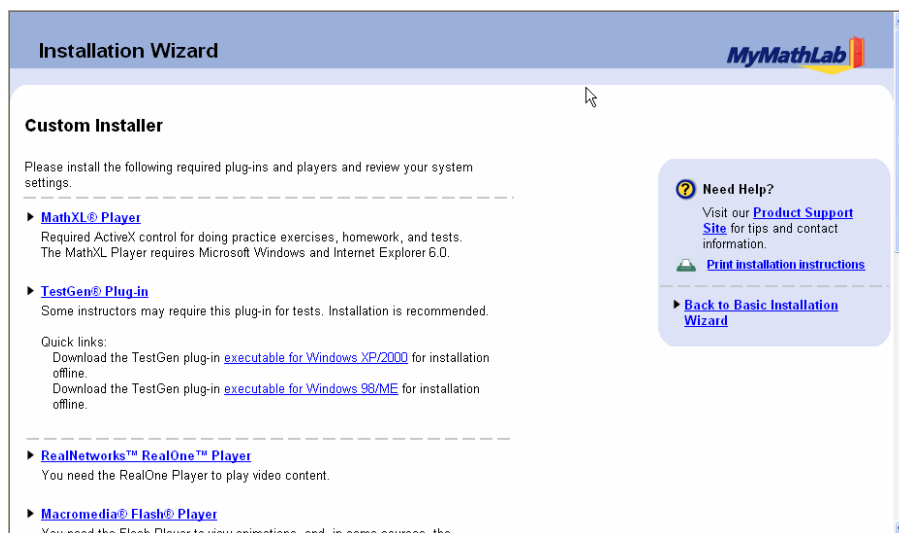
The screenshot shows the "MyMathLab Installation Wizard" announcement page. The top navigation bar includes "Home", "Help", and "Logout". The page title is "COURSES > PRE-ALGEBRA MATH-FLEX, SPRING 2006 > ANNOUNCEMENTS". A prominent banner for "PEARSON Addison Wesley MyMathLab Basic Mathematics 9e" by Marvin L. Bittinger is displayed. Below the banner, there are tabs for "VIEW TODAY", "VIEW LAST 7 DAYS", "VIEW LAST 30 DAYS", and "VIEW ALL". The date range "January 04, 2006 - January 11, 2006" is shown. The main content area contains three announcements, all dated "Thu, Jun 30, 2005":

- Welcome to MyMathLab for Basic Mathematics, 9/e, by Marvin L. Bittinger!** Posted by Blackboard Administrator. The text states: "Your first step is to run the [MyMathLab Installation Wizard](#). The wizard walks you through installing the plug-ins and players you need to access the multimedia content in your course."
- Take a tour!** Posted by Blackboard Administrator. The text states: "The [How to Enter Answers Using the MathXL Player](#) tour walks you through how to enter math notation when you're working on a homework assignment, quiz, or practice exercise in MyMathLab."
- Instructor Resources** Posted by Blackboard Administrator. The text states: "This course includes valuable instructor resources designed to supplement your textbook and help you teach with MyMathLab. To find these resources:"

- And continue by clicking on Custom Install.



- Install MathXL Player or any other components required for your computer.



## How to access Homework and Tests.

- After logging in, click on Pre-Algebra Math-Flex, Spring 2006 to enter the class.
- Then click on the DO HOMEWORK tab (or TAKE A TEST if you need to take a test).

CourseCompass

Home | ? Help | Logout

My CourseCompass | Courses | Support | Research Navigator

COURSES > PRE-ALGEBRA MATH-FLEX, SPRING 2006 > ANNOUNCEMENTS

PEARSON Addison Wesley MyMathLab

Basic Mathematics 9e

Marvin L. Bittinger

VIEW TODAY | VIEW LAST 7 DAYS | VIEW LAST 30 DAYS | VIEW ALL

January 04, 2006 - January 11, 2006

Thu, Jun 30, 2005 -- *Welcome to MyMathLab for Basic Mathematics, 9/e, by Marvin L. Bittinger!* Posted by Blackboard Administrator  
 Your first step is to run the [MyMathLab Installation Wizard](#). The wizard walks you through installing the plug-ins and players you need to access the multimedia content in your course.

Thu, Jun 30, 2005 -- *Take a tour!* Posted by Blackboard Administrator  
 The [How to Enter Answers Using the MathXL Player](#) tour walks you through how to enter math notation when you're working on a homework assignment, quiz, or practice exercise in MyMathLab.

Thu, Jun 30, 2005 -- *Instructor Resources* Posted by Blackboard Administrator  
 This course includes valuable instructor resources designed to supplement your textbook and help you teach with MyMathLab. To find these resources:

- Then click on any assigned homework to start.

VIEW COURSE CALENDAR >

**DO HOMEWORK**

Assigned Homework To work on a homework assignment, click on the homework name below.

Ch.	Homework	Due	Last Submitted
1	<a href="#">Homework 1, 1.1-1.5</a>	1/23/2006 11:59 PM	
1	<a href="#">Homework 2, 1.6-1.9</a>	1/26/2006 11:59 PM	